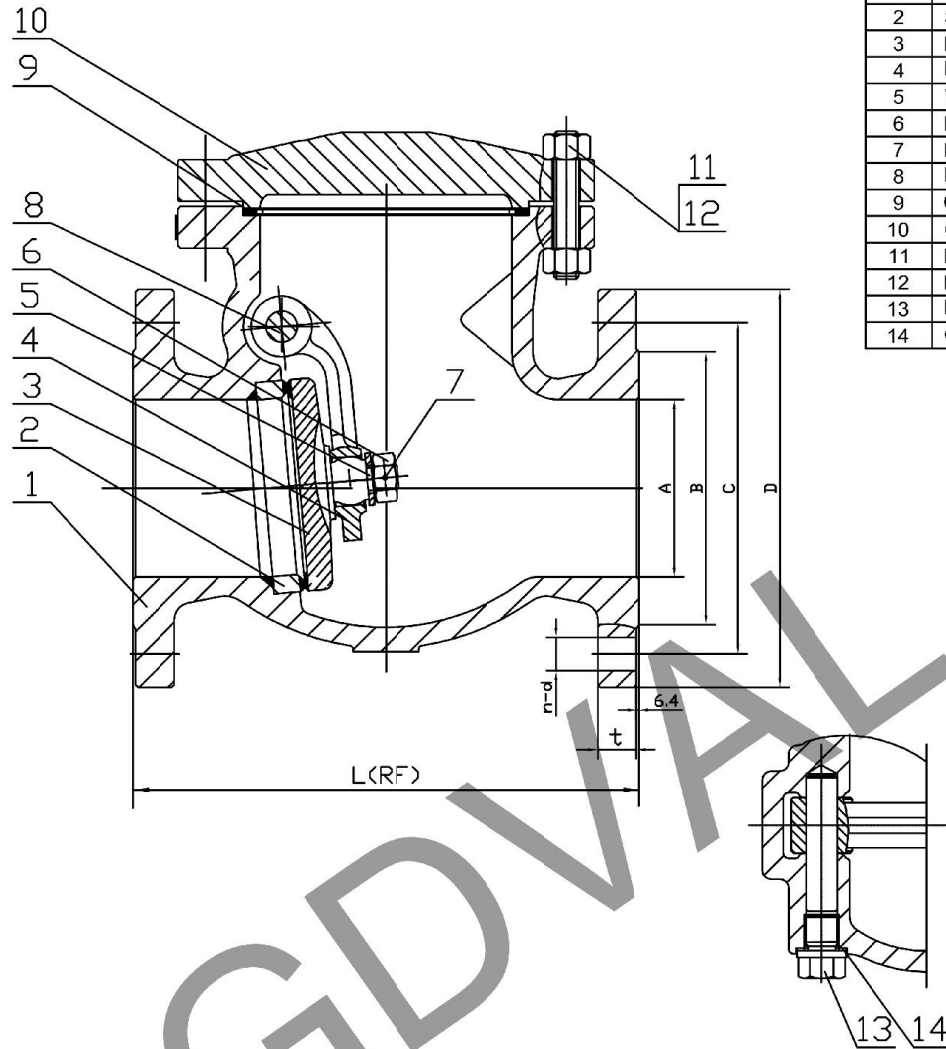


PARTS & MATERIAL LIST

ITEM	PART NAME	MATERIAL	ITEM	PART NAME	MATERIAL
1	Body	ASTM A216 WCB	1	Body	ASTM A351 CF8M
2	Seat	ASTM A105+STL	2	Seat	ASTM A182 F316+STL
3	Disc	ASTM A105+Cr13	3	Disc	ASTM A351 CF8M
4	Hinge	ASTM A216 WCB	4	Hinge	ASTM A351 CF8M
5	Washer	1035	5	Washer	1035
6	Disc Nut	ASTM A194 2H	6	Disc Nut	ASTM A194 8
7	Disc Pin	ASTM A276 type 304	7	Disc Pin	ASTM A276 type 316
8	Hinge Pin	2Cr13	8	Hinge Pin	ASTM A276 type 316
9	Gasket	304+Graphite	9	Gasket	316+Graphite
10	Cover	ASTM A216 WCB	10	Cover	ASTM A351 CF8M
11	Nut	ASTM A194 2H	11	Nut	ASTM A194 8
12	Bolt	ASTM A193 B7	12	Bolt	ASTM A193 B8
13	Plug	1035	13	Plug	1035
14	Gasket	304+Graphite	14	Gasket	316+Graphite



Note:

- 1.Design as per BS1868
- 2.Flange dimension as per ANSI B 16.5
- 3.Face to face dimension as per ANSI B 16.10
- 4.Test & Inspect confirm to API598

SIZE	A	L(RF)	B	C	D	t	n-d	Weight(kg)
2"-600	51	292	92	127	165	26	8-19	36
3"-600	76	356	127	168	209.6	32	8-22.4	52

2"~3"-600#-Check Valve

CLIENT		DWG REV .NO	00
P.O.NO		CLASS	
APPROVED BY		HYDROSTATIC TEST (PSI)	SHELL SEAT
REVIEWED BY		AIR TSET	
MADE BY		DATE	
DRAWING NO	175XU/175-LU-CF8M		
GDVAL VALVE			