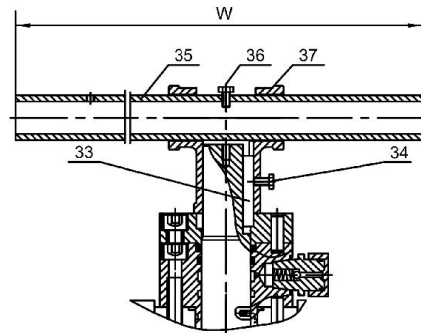
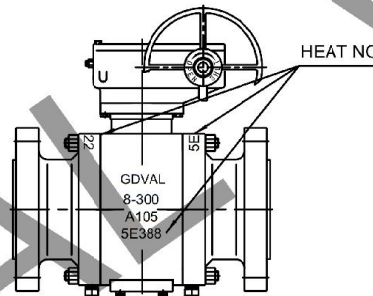


"\*" Lever Operator



Lever Operator



VALVE MARKING

VALVE SIZE	DIMENSION IN mm.								WT kg's	
	L	H	D	A	B	C	E	n-Ød1		
2"	292	198	51	165	26	92	127	8-Ø19	580*	45
3"	356	249	76	210	32	127	168	8-Ø22	700*	80
4"	432	259	102	273	38	157	216	8-Ø25	800*	150
6"	559	287	152	356	48	216	292	12-Ø29	1100*	248
8"	660	340	203	419	56	270	349	12-Ø32	400	438
10"	787	508	254	508	64	324	432	16-Ø35	600	701

Note:

- 1.Design as per API 6D
- 2.RF end dimension as per ANSI B 16.5
- 3.Face to face according to ANSI B 16.10
- 4.Test & Inspect confirm to API 6D
- 5.Fire safe as per API 607

PARTS & MATERIAL LIST

ITEM	PART NAME	MATERIAL
1	Body flange	ASTM A105
2	Body	ASTM A105
3	Ball	ASTM A182-F316
4	Spring	Inconel X-750
5	Seat ring	ASTM A182-F316
6	Seat	R-PTFE
7	Vent Valve	ASTM A182 Type 316
8	Plate	ASTM A276 Type 316
9	Seat gasket	Graphite
10	O-ring	VITON
11	Body stud	ASTM A193-B7
12	Body nut	ASTM A194-2H
13	Body gasket	316+graphite
14	Antistatic device	ASTM A276 Type 316
15	Bearing	1045+PTFE
16	Stem	ASTM A182 Type 316
17	Stem bearing	R-PTFE
18	Stuffing box	ASTM A105
19	Injection fitting	Carbon Steel
20	Adaptor flange	Carbon Steel
21	Pin	ASTM A276 Type 410
22	Screw	ASTM A193-B7
23	Packing	Flex graphite
24	Gland	ASTM A276 Type 410
25	Pin	ASTM A276 Type 410
26	Gear	ASTM A216 GR.WCB
27	Screw	ASTM A193-B7
28	Gasket	316+graphite
29	Drain Plug	ASTM A182 F304
30	Trunnion	ASTM A105
31	O-ring	VITON
32	Injection fitting	Carbon Steel
33	Key	Carbon Steel
34	Screw	Carbon Steel
35	Handle	Carbon Steel
36	Screw	Carbon Steel
37	Handle Guide	Carbon Steel

2"-10"-600#-FORGED STEEL BALL VALVE

CLIENT		DWG REV .NO	00
P.O.NO		CLASS	
APPROVED BY		HYDROSTATIC TEST (PSI)	SHELL
REVIEWED BY			SEAT
MADE BY		AIR TSET	
DRAWING NO	2"-10"-LF851	DATE	

GDVAL VALVE